

Q²M CLAY

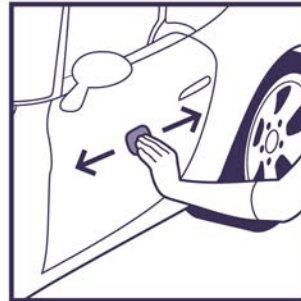
DIRECTIONS:



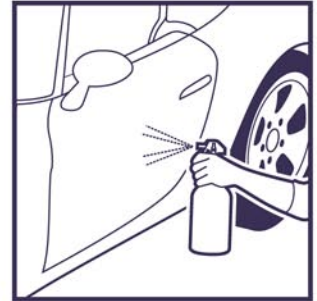
Wash the car before claying.



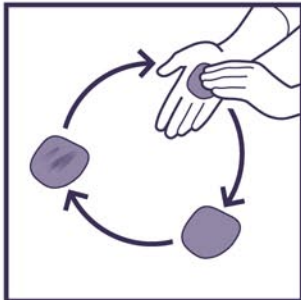
Form a piece of the clay in the palm of your hand.



Move the clay in straight motion without pressure.



Provide sufficient lube for the clay process (you may use Q²M IRON or diluted Q²M BATHE). Lack of lube may cause light marring.



Check the surface of the clay bar - if any contamination are visible knead the bar.

Check the paint's surface for any signs of contamination left.

If results are satisfying, move to the next panel/section.



Note, that if your clay bar falls on the ground, it is not reusable!

PRECAUTIONS:

- Keep out of reach of children.
- Always clay in a cool, shady place.

GYEON[®]
quartz cloth

MANUAL INSTRUCTIONS